



Bradford District population update

At a glance:

- Bradford's population has increased by 3,000 people to 531,200.
- Bradford is the fourth largest authority after Birmingham, Leeds and Sheffield
- Bradford has the third highest percentage of under 16s in England
- Bradford has the highest percentage of under 10s in West Yorkshire

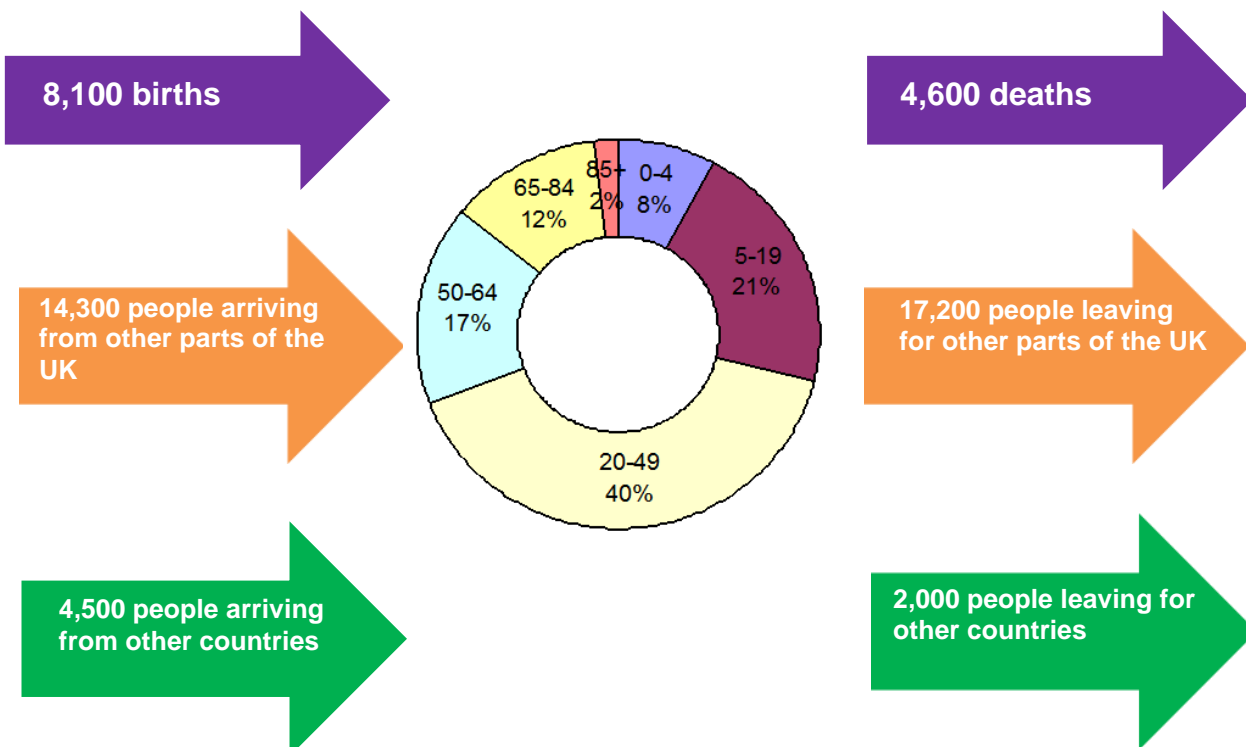
Introduction

The 2015 mid-year population estimates were published by the Office for National Statistics (ONS) on 23 June 2016. These estimates are produced for all local authorities and updated annually. The estimates for Bradford District include the people usually resident here and long-term international migrants (people who intend to stay for 12 months or more), but not short-term migrants (who stay or leave for less than 12 months).

Summary

The 2015 mid-year estimate for Bradford's population is 531,200 people, an increase of 3,000 people since June 2014. The population consists of 261,850 men (49%) and 259,350 women (51%).

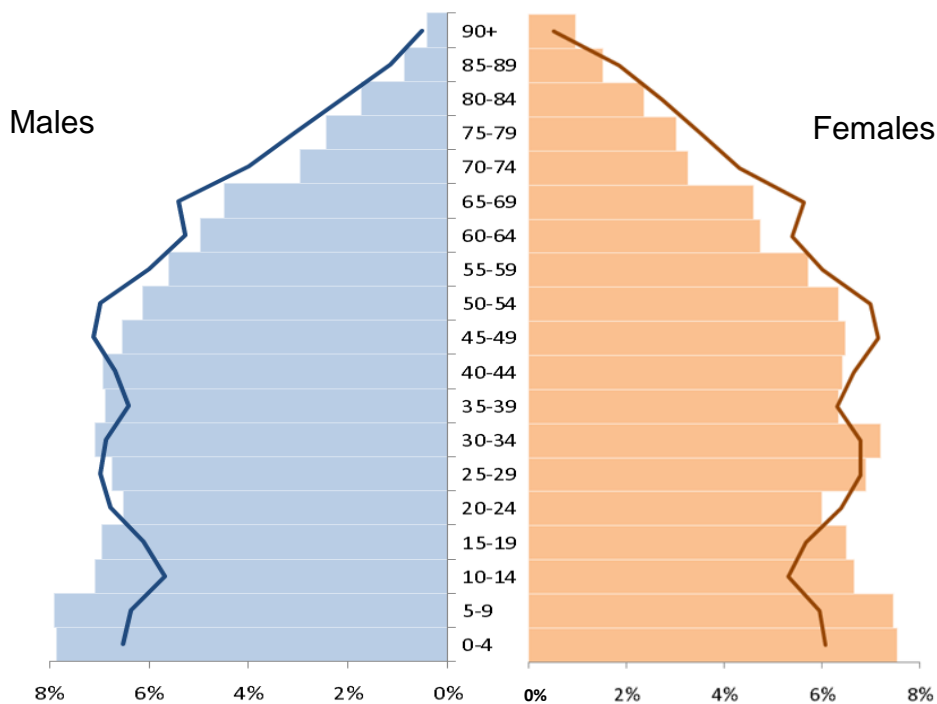
Bradford is the fourth largest local authority in England in terms of population (after Birmingham, Leeds and Sheffield). Manchester is the fifth largest local authority.



The increase in the District's population is largely due to "natural change" - there have been around 3,500 more births than deaths, although this has been balanced by a larger number of people leaving Bradford to live in other parts of the UK than coming to live here and a lower number of international migrants. In 2014/15 the net internal migration was -2,900 and the net international migration was 2,500.

A large proportion of Bradford's population is dominated by the younger age groups. More than one-quarter (29%) of the District's population is aged less than 20 and nearly seven in ten people are aged less than 50. Bradford has the highest percentage of the under 16 population in England after the London Borough of Barking and Dagenham and Slough Borough Council.

The chart below compares the 2015 mid-year estimates with the estimates for England (shown as a line). Bradford has a larger proportion of males and females under 20, but a lower proportion of older people.

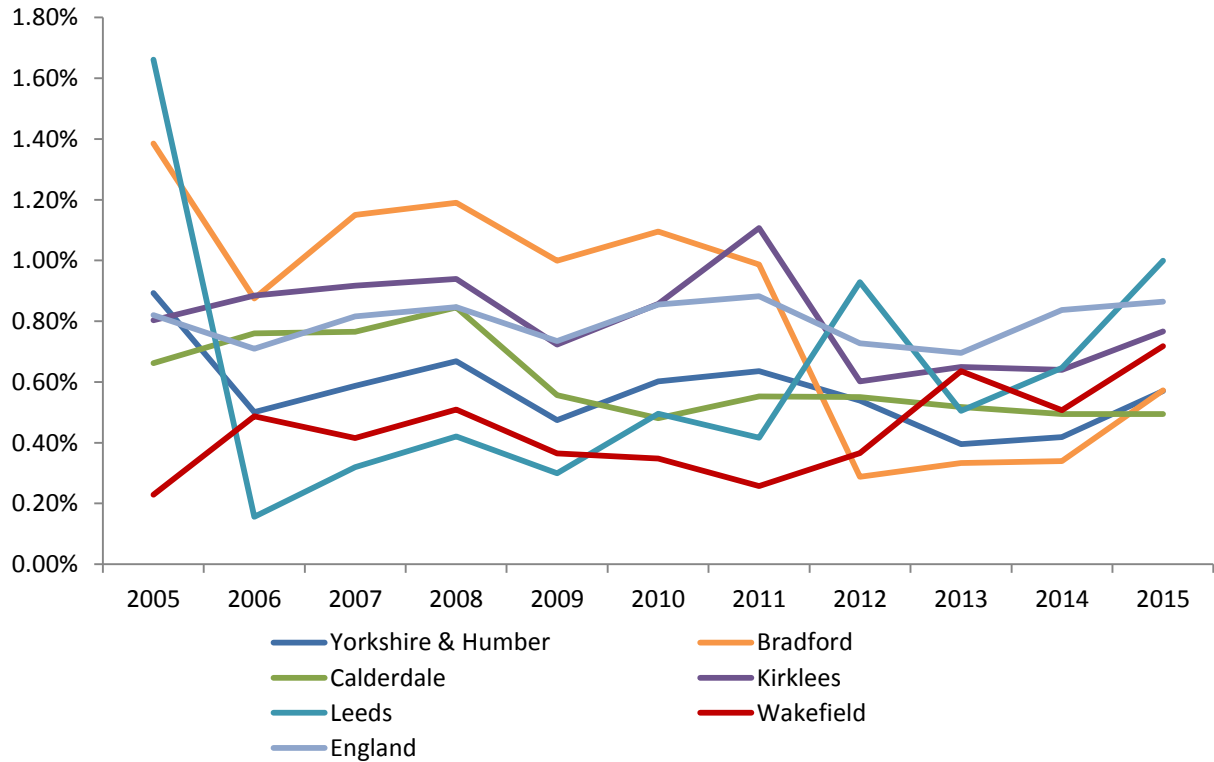


Population change from 2005 to 2015

Since 2005 Bradford District's population has grown by an estimated total of 39,800 people (8.1%), second to Kirklees (8.4%). Over the same time period the population in Calderdale increased by 6.2%, Leeds by 5.3% and Wakefield by 4.7%. The national population increased by 8.3%.

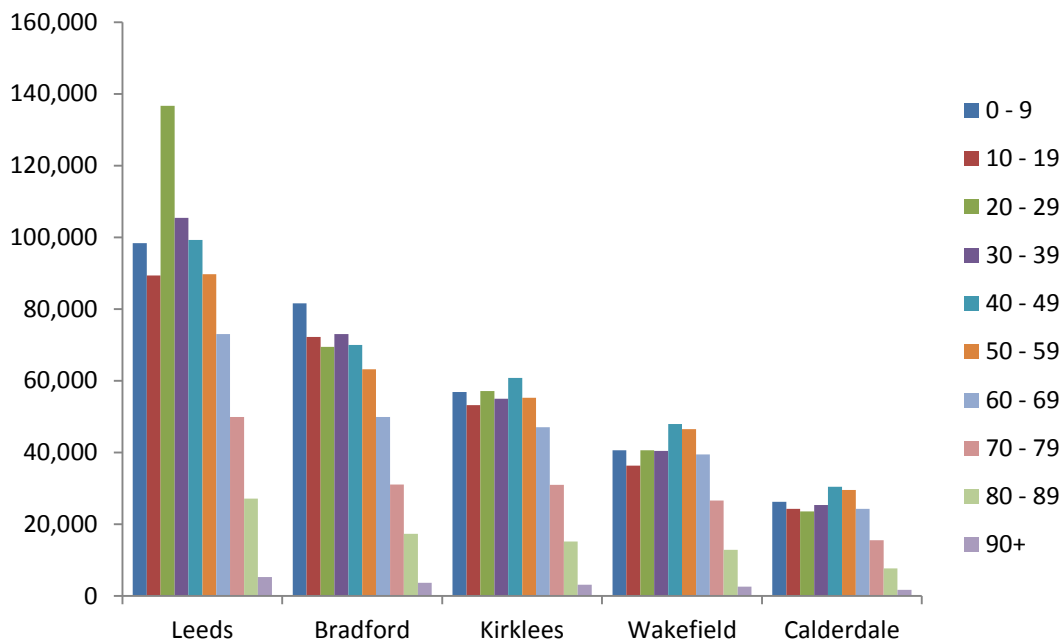
In Bradford there was a steady growth of around 1% each year until 2011. From 2012 to 2014 the rate of growth slowed to 0.3%, but this increased to 0.6% between 2014 and 2015. This trend is broadly similar for the region and the other West Yorkshire councils (apart from Calderdale) which have all seen an increase in their population over the last year. By contrast the population increase for England remained static at around 0.8% over this same time period.

Population percentage increase 2005 - 2015



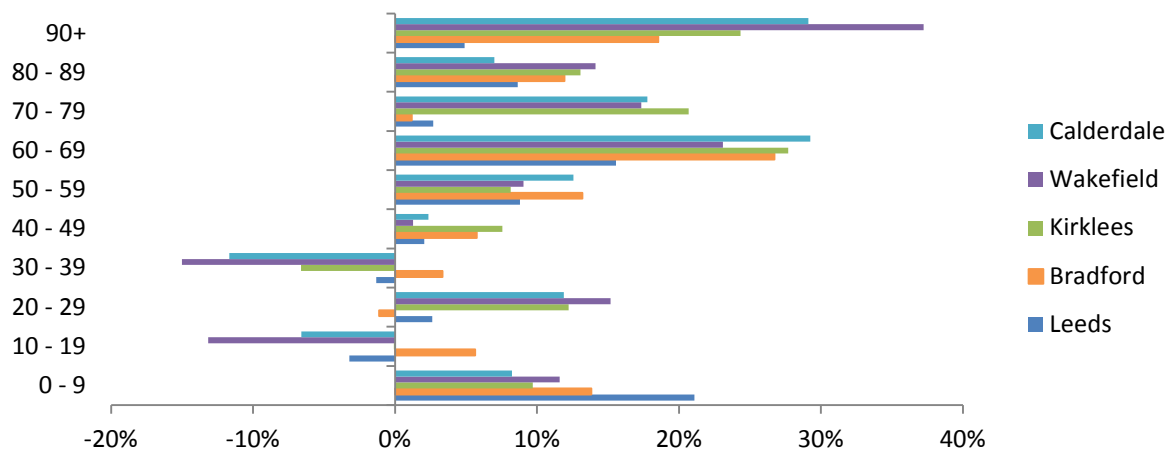
The following chart shows that the largest population group for most local authorities in West Yorkshire in 2015 is people aged 40 – 49. Leeds’ largest population group is people aged 20 – 29 mainly due to the large student population. Bradford alone has the largest population group comprising children aged 0 – 9.

Total population by ten year age groups - West Yorkshire local authorities



Within the last ten years the 60 – 69 age group has seen the largest percentage population increase for most local authorities in West Yorkshire. This is followed by increases for the 90+ age group. Interestingly the 10 – 19 and 30 – 39 age groups have seen a decrease for all local authorities, apart from Bradford which has seen an increase.

Percentage population change by ten year age group 2005 to 2015



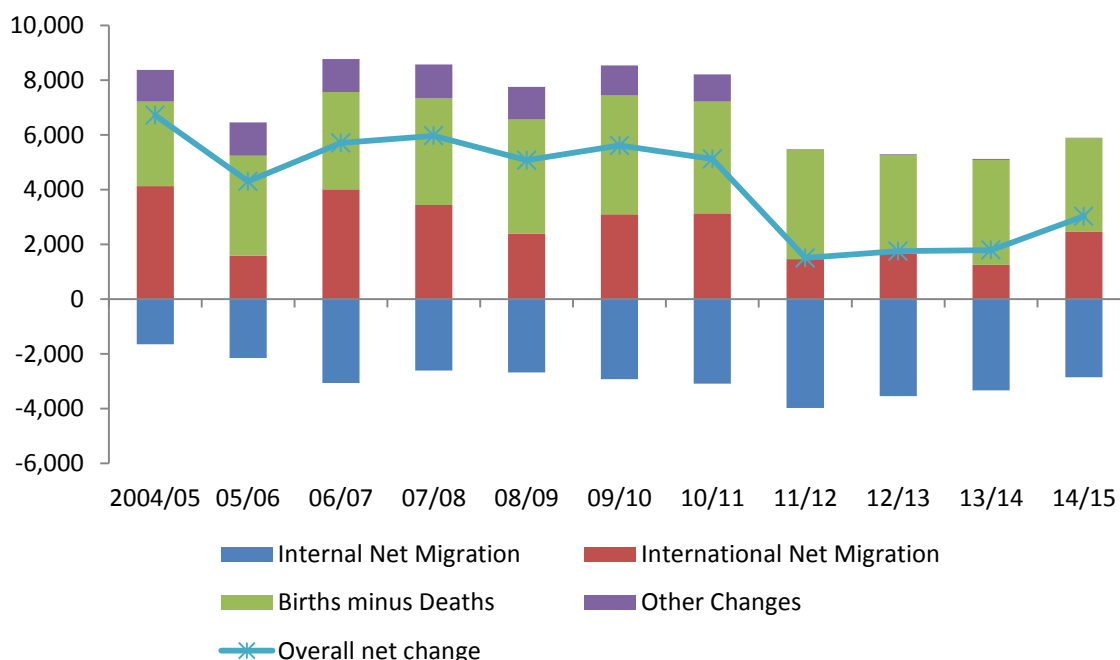
Reasons for population change

Increases and decreases in the population are caused by a number of different factors: natural change (the difference between the numbers of births and deaths), migration (both internal – within the UK and international) and “other changes”.

Within the last year there were 3,400 more births than deaths and just over 400 more emigrants leaving the District than coming to live here.

The following chart shows the changes in these different factors over the past 10 years, together with the overall net change in the District’s population.

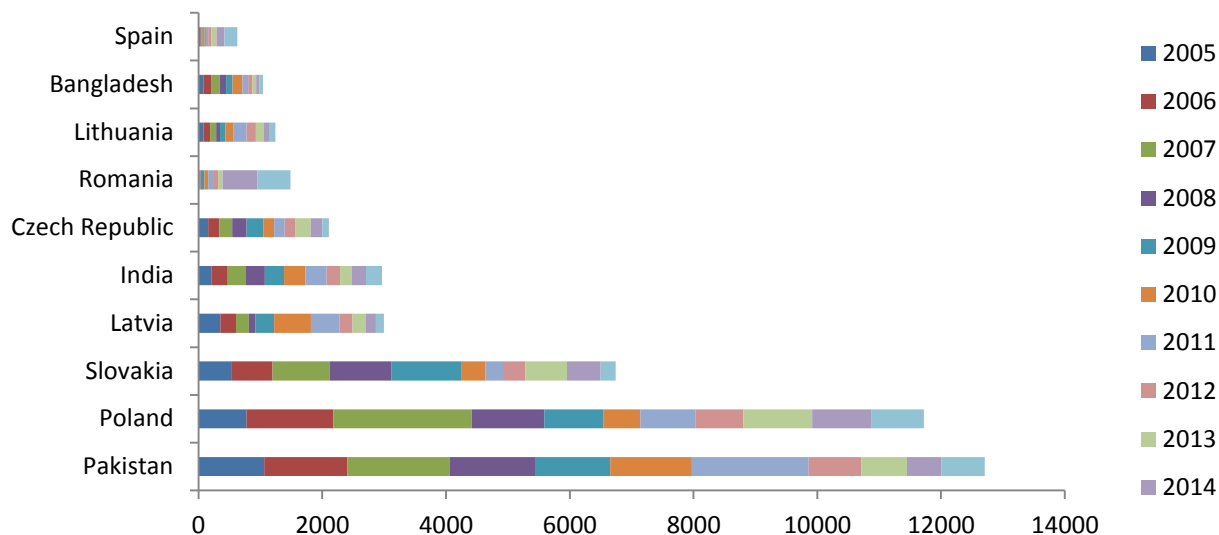
Main drivers of population change for Bradford District 2004/5 to 2014/15



Migrants to Bradford

The Department of Work and Pensions publish figures which show the nationality of people who came to live in the UK and successfully applied for a national insurance number (NINo) in order to work or claim benefits (not including young people under 16 and asylum seekers).

Top ten countries of origin



Within the last ten years the highest number of people who have successfully registered in Bradford have come from Pakistan, followed by Poland.

Opening up the labour market to EU Accession states in 2004 led to a large influx of economic migrants who overtook the number of migrants from India, although applications from Polish, Latvian, Lithuanian and Slovak nationals have all seen a decrease since 2013. Interestingly the number of applications from Romanian and Spanish nationals has seen an increase since 2013, although migrants from Pakistan still comprise the largest number of applicants for NINOs in Bradford.

Data sources and further information

A briefing note about the population of Bradford at ward level will be published at the end of November 2016

Sources: ONS population estimates, National Insurance applications

Link: www.ons.gov.uk/peoplepopulationandcommunity

Contact: Catriona Colborn

Email: catriona.colborn@bradford.gov.uk Telephone: 01274 434691

Office of the Chief Executive,

City of Bradford Metropolitan District Council,

3rd Floor, Margaret McMillan Tower, Princes Way, Bradford, BD1 1NN

www.bradford.gov.uk/link

Unless marked otherwise, you are free to use the content of this bulletin in your own work as long as you quote the source.

The wording in this publication can be made available in other formats such as large print. Please call 01274 434691